

RAB40AL Antibody (N-term)
Affinity Purified Rabbit Polyclonal Antibody (Pab)
Catalog # AP12011a**Specification**

RAB40AL Antibody (N-term) - Product Information

Application	IHC-P, WB,E
Primary Accession	POC0E4
Other Accession	Q8WXH6 , NP_001027004.1
Reactivity	Human
Host	Rabbit
Clonality	Polyclonal
Isotype	Rabbit IgG
Calculated MW	31239
Antigen Region	7-36

RAB40AL Antibody (N-term) - Additional Information**Gene ID** 282808**Other Names**

Ras-related protein Rab-40A-like, Ras-like GTPase, RAB40AL, RLGP

Target/Specificity

This RAB40AL antibody is generated from rabbits immunized with a KLH conjugated synthetic peptide between 7-36 amino acids from the N-terminal region of human RAB40AL.

Dilution

IHC-P~~1:10~50

WB~~1:1000

E~~Use at an assay dependent concentration.

Format

Purified polyclonal antibody supplied in PBS with 0.09% (W/V) sodium azide. This antibody is purified through a protein A column, followed by peptide affinity purification.

Storage

Maintain refrigerated at 2-8°C for up to 2 weeks. For long term storage store at -20°C in small aliquots to prevent freeze-thaw cycles.

Precautions

RAB40AL Antibody (N-term) is for research use only and not for use in diagnostic or therapeutic procedures.

RAB40AL Antibody (N-term) - Protein Information**Name** RAB40AL

Synonyms RLGP

Function May be a substrate-recognition component of a SCF-like ECS (Elongin-Cullin-SOCS-box protein) E3 ubiquitin ligase complex which mediates the ubiquitination and subsequent proteasomal degradation of target proteins.

Cellular Location

Membrane; Lipid-anchor; Cytoplasmic side. Cytoplasm. Mitochondrion

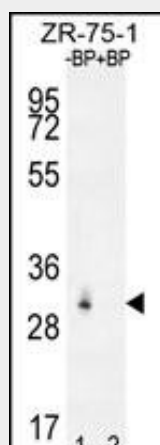
Tissue Location

Expressed in brain, lung, heart, skeletal muscle, kidney and liver. Highest expression in brain. Expressed in fetal brain and kidney.

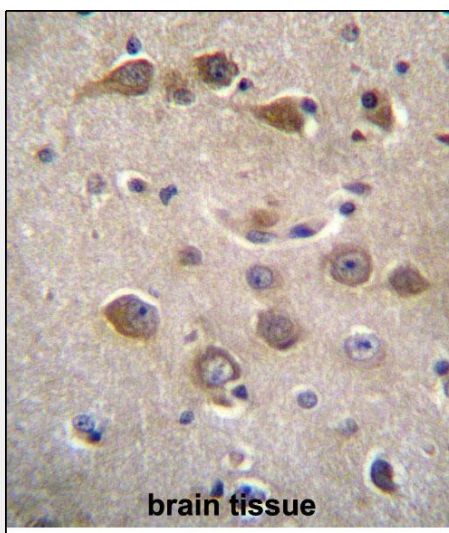
RAB40AL Antibody (N-term) - Protocols

Provided below are standard protocols that you may find useful for product applications.

- [Western Blot](#)
- [Blocking Peptides](#)
- [Dot Blot](#)
- [Immunohistochemistry](#)
- [Immunofluorescence](#)
- [Immunoprecipitation](#)
- [Flow Cytometry](#)
- [Cell Culture](#)

RAB40AL Antibody (N-term) - Images

Western blot analysis of RAB40AL Antibody (N-term) Pab (Cat. #AP12011a) pre-incubated without (lane 1) and with (lane 2) blocking peptide in ZR-75-1 cell line lysate. RAB40AL Antibody (N-term) (arrow) was detected using the purified Pab.



RAB40AL Antibdy (N-term) (Cat. #AP12011a)immunohistochemistry analysis in formalin fixed and paraffin embedded human brain tissue followed by peroxidase conjugation of the secondary antibody and DAB staining.This data demonstrates the use of RAB40AL Antibdy (N-term) for immunohistochemistry. Clinical relevance has not been evaluated.

RAB40AL Antibody (N-term) - Background

This gene encodes a member of the Rab40 subfamily of Rab small GTP-binding proteins that contains a C-terminal suppressors of cytokine signaling box. Disruptions in this gene are associated with Duchenne muscular dystrophy.

RAB40AL Antibody (N-term) - References

Saito-Ohara, F., et al. Am. J. Hum. Genet. 71(3):637-645(2002) Kile, B.T., et al. Trends Biochem. Sci. 27(5):235-241(2002)